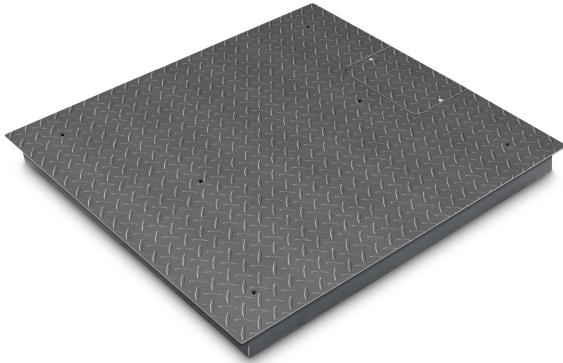


KERN KFP 6000V20M

KERN

Weighing bridge made of non-slip corrugated steel plate, lacquered



Functions

IP protection - load cell	IP67
IP protection - platform	IP67 (junction box)

Packing & Shipping

Readability force [d] (N)	2 d
Dimensions packaging (W×D×H)	1550×1300×350 mm
Net weight	208 kg
Shipping method	Freight
Net weight approx.	210 kg
Gross weight approx.	275 kg
Shipping weight	274 kg

Services (optional)

Article number for conformity assessment	965-232
Article number for DAkkS calibration	963-132

Pictograms

STANDARD



FACTORY



Category

Brand	KERN
Product category	Component
Product group	Weighing bridge
Product family	KFP-V20-IP67

Measuring System

Weighing capacity [Max]	6000 kg
Readability [d]	2 kg
Minimum weight [Min]	40 kg
Loadcell type	ZEMIC H8C 3 ton
Load cell connection	6-wire

Approval

Verification scale interval [e]	2 kg
Conformity assessment possible ex works	✓

Construction

Dimensions weighing platform (W×D×H)	1500×1500×123 mm
Material weighing plate	steel, powder-coated
Material platform	steel, powder-coated
Dimensions weighing surface (W×D)	1500×1500 mm
Cable length	5 m
Allowed cable length display device [Max]	20 m
Material load cell(s)	alloyed steel
Load cells - number	4
Levelling feet adjustable	✓